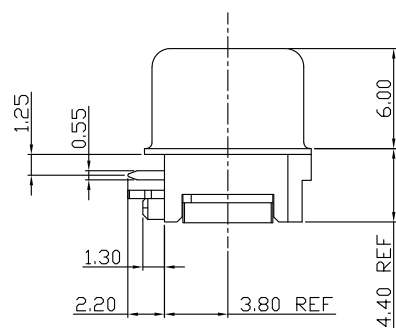
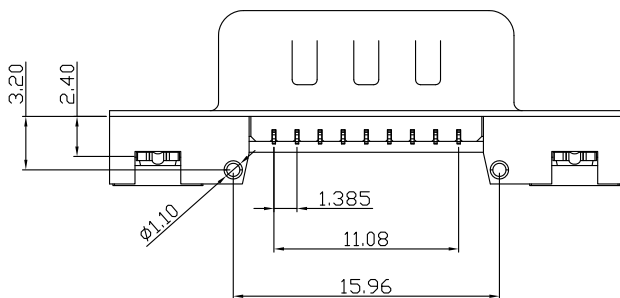


P.C.B. LAYOUT

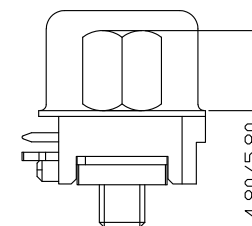
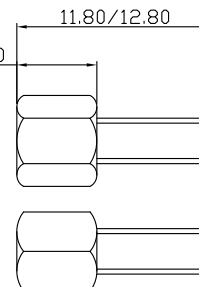
- MATERIALS:**
- Housing: PA9T / LCP (UL 94V-0), Black
  - Contacts: Brass
  - Shell: SPCC
  - Rivet: Copper Alloy (Lead  $\leq$  40000PPM)
  - Board Lock: Brass
  - Screw: SPCC
- Or Copper Alloy (Lead  $\leq$  40000PPM)

- FINISH:**
- Contacts: Gold Flash Plated on Contact Area  
Tin Plated on Solderails  
Nickel Under Plated Over All
  - Shell: Nickel Plated
  - Rivet: Nickel Plated
  - Board Lock: Tin Plated
  - Screw: Nickel Plated

- SPECIFICATION:**
- Current Rating: 2 Amp
  - Dielectric Withstanding Voltage: AC 500V r.m.s.
  - Insulation Resistance: 1000M $\Omega$  Min. at DC 500V
  - Contact Resistance: 30m $\Omega$  Max.
  - Operating Temperature: -55°C to 105°C



鉚合型



鉚合鎖螺絲型

僅供參考

**XIAN YI PRECISION CO., LTD.**  
祥益精密股份有限公司

TITLE / 品名: D-Sub 90度 二排 9公 沉板1.2 板上3.8 板邊距1.25 Dip Type (鐵殼10.0/單排P)

核準發行章

PART NO / 料號: D40510-09M-Rxxxx

APPROVE / 核準	CHECKED / 審查	DRAWING / 繪圖	DRAWING NO / 圖號	UNIT / 單位	☉	☐
<i>Kin</i>	<i>Chenrong</i>	<i>Chenrong</i>	L-0D-003-00	mm	SHEET 1 OF 1	

NO.	REV / 版本	圖面僅供參考, 實際尺寸以承認圖為主	2025/12/19
		修訂內容	日期