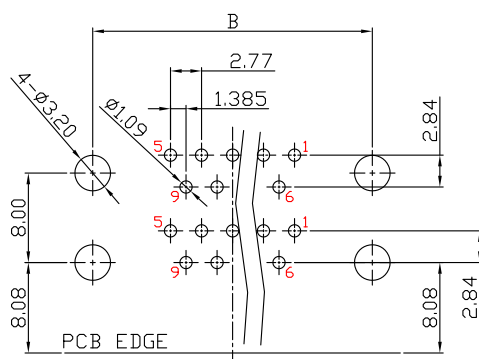
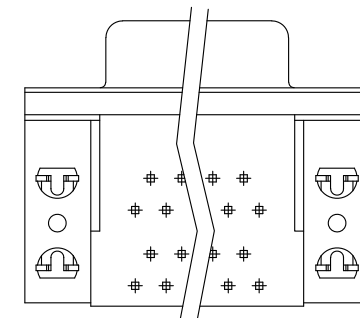


鉗合鎖螺絲型



P.C.B. LAYOUT



鉗合型

MATERIALS:

1. Housing: PBT (UL 94V-0), Black
2. Connecting Seat: PA66 (UL 94V-0), Black
3. Contacts: Brass
4. Shell: SPCC
5. Rivet: Copper Alloy(Lead $\leq$ 40000PPM)
6. Board Lock: SPCC
7. L Bracket: SPCC
8. Screw: SPCC  
Or Copper Alloy(Lead $\leq$ 40000PPM)

FINISH:

1. Contacts: Gold Flash Plated on Contact Area  
Tin Plated on Solderails  
Nickel Under Plated Over All
2. Shell: Nickel Plated
3. Rivet: Nickel Plated
4. Board Lock: Tin Plated
5. L Bracket: Nickel Plated
6. Screw: Nickel Plated

SPECIFICATION:

1. Current Rating: 2 Amp
2. Dielectric Withstanding Voltage: AC 500V For 1 minute
3. Insulation Resistance: 5000M $\Omega$  Min
4. Contact Resistance: 30m $\Omega$  Max.
5. Operating Temperature: -55°C to +105°C

僅供參考

NO. OF POS.	A	B	C
09	30.80	24.99	16.33
15	39.20	33.32	24.66
25	53.04	47.04	38.38
37	69.40	63.50	54.80

**XIAN YI PRECISION CO., LTD.**  
祥益精密股份有限公司

TITLE / 品名: D-Sub 90度 疊層 二排 母座+母座 Dip Type (層距15.88)

核準發行章

PART NO / 料號: DA2122-xFxF-Rxxxx

APPROVE / 核準	CHECKED / 審查	DRAWING / 繪圖	DRAWING NO / 圖號	UNIT / 單位	☉	☐
<i>Kin</i>	<i>Chenrong</i>	<i>Chenrong</i>	K-2D-013-00	mm	SHEET 1 OF 1	

NO.	REV / 版本	圖面僅供參考, 實際尺寸以承認圖為主	2025/12/19
		修訂內容	日期